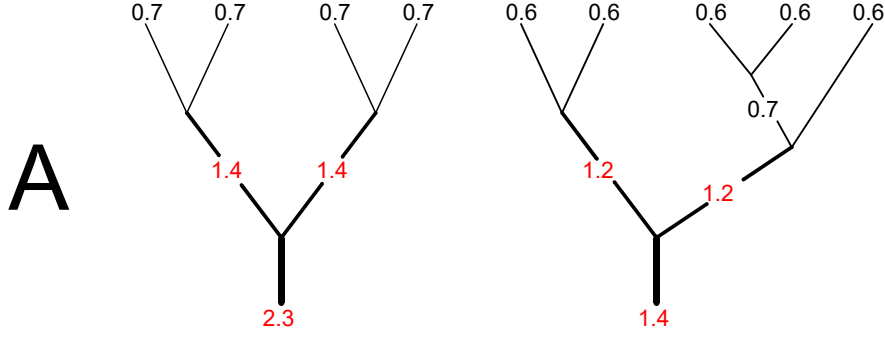
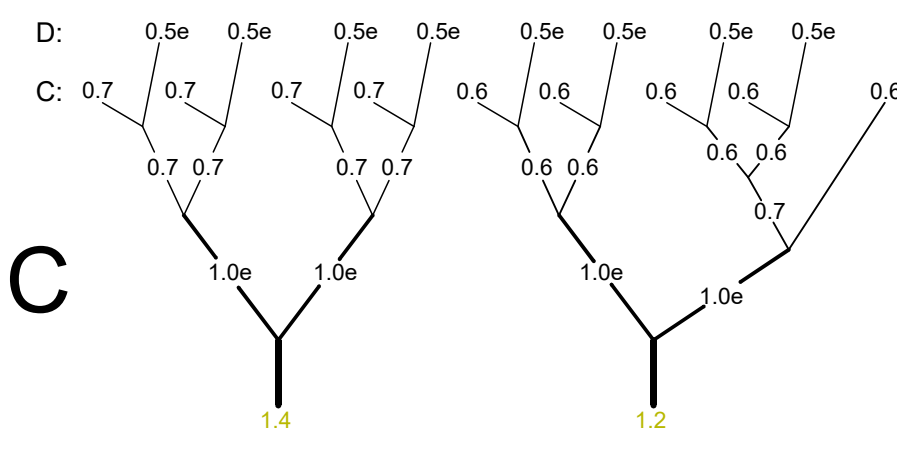
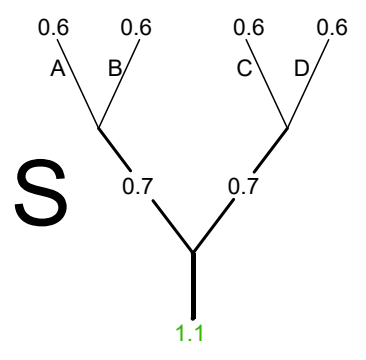
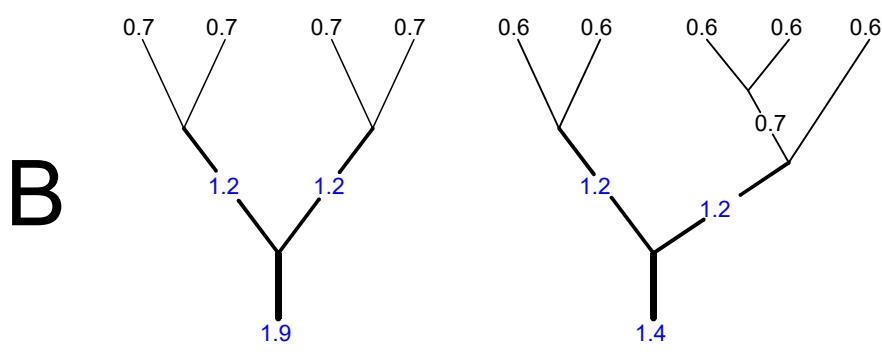


Nevada2 - 28, 30 - diameters and colors final

MIDDLE OF CANOPY



LIROS Dyneema
 0.6 = DC 60 (white)
 0.7 = DC 100 (white)
 2.3 = PPSL 350
 1.9 = PPSL 275
 1.4 = PPSL 200
 1.2 = PPSL 191
 1.1 = PPSL 120



Edelrid Aramid
 1.0e = 8000/U-130-000
 0.7e = 8000/U-070-000
 0.5e = 8000/U-045-000
Edelrid Dyneema
 2.5e = A-10/N-300-024

