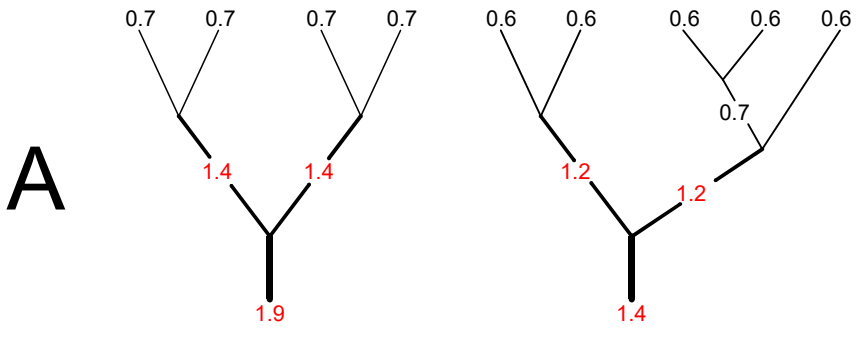
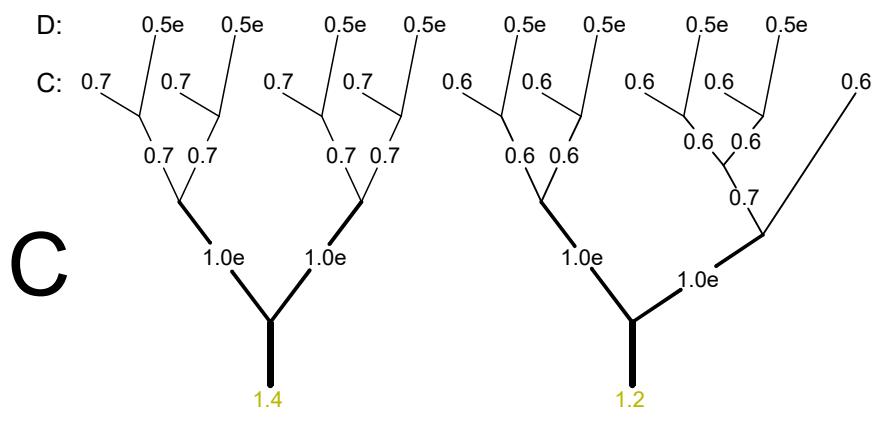
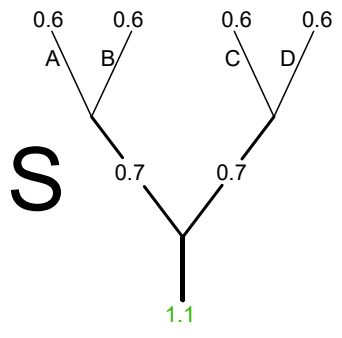
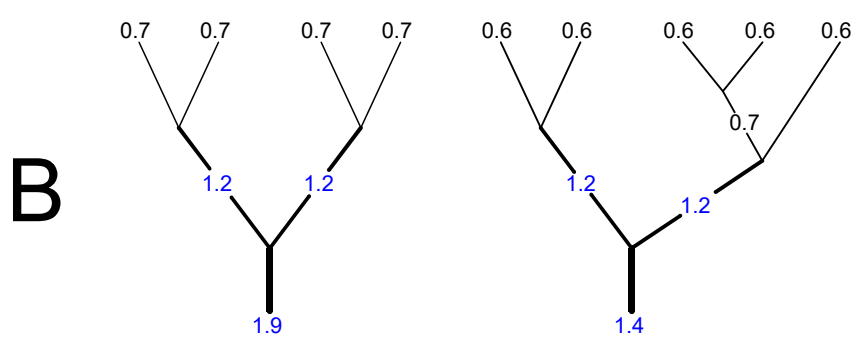


# Nevada2 - 22, 24, 26 - diameters and colors final

MIDDLE OF CANOPY



**LIROS Dyneema**  
 0.6 = DC 60 (white)  
 0.7 = DC 100 (white)  
 1.9 = PPSL 275  
 1.4 = PPSL 200  
 1.2 = PPSL 191  
 1.1 = PPSL 120



**Edelrid Aramid**  
 1.0e = 8000/U-130-000  
 0.7e = 8000/U-070-000  
 0.5e = 8000/U-045-000  
**Edelrid Dyneema**  
 2.5e = A-10/N-300-024

