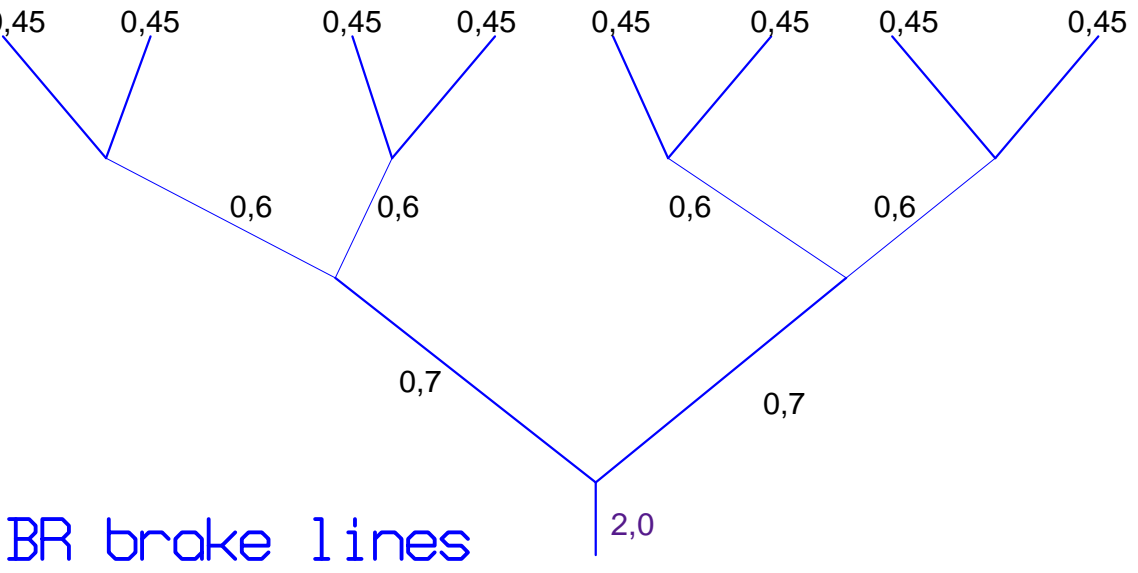
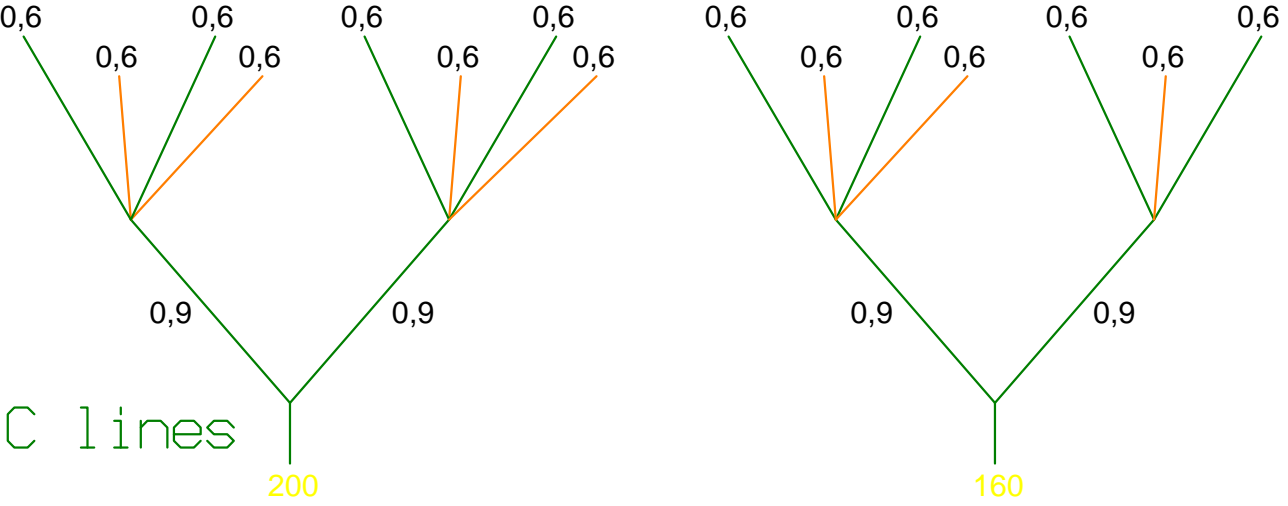
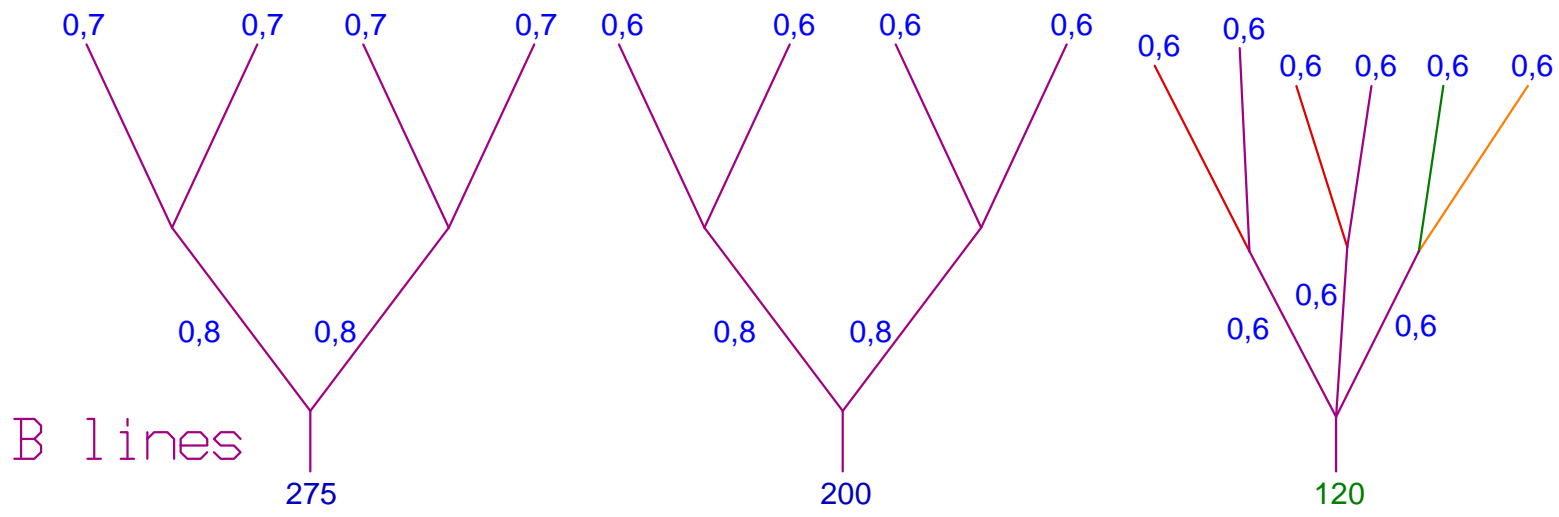
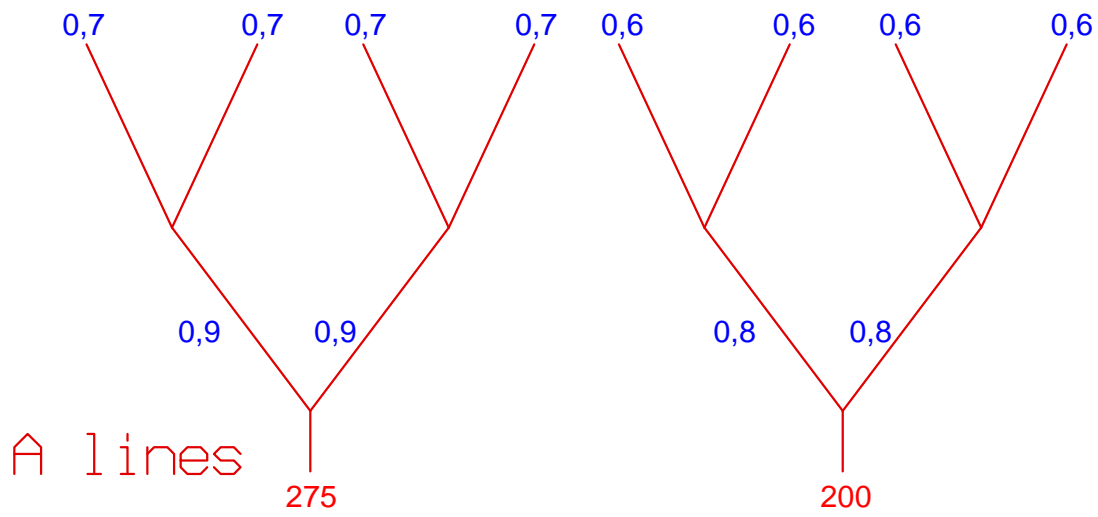


DESIGN NAME: <b>Eiger</b>	
FILENAME: <b>Eiger</b>	
DATE: 3.9. 2015	
DESIGNER: Cyprian Koren	
KITE STATS	MATERIALS:
Simple Area:	
Simple AR:	



- Liros Dyneema:**  
0.6 = DC 60 (white)  
0.7 = DC 100 (white)  
0.8 = DC 120 (white)  
0.9 = DC 160 (white)
- Edelrid:**  
A-8000/U-050 0,6mm  
A-8000/U-070 0,7mm  
A-8000/U-130 0,9mm
- 
- LIROS PPSL:**  
275 = PPSL 275  
200 = PPSL 200  
160 = PPSL 160  
120 = PPSL 120
- Edelrid Aramid**  
0.45.....7000-045  
0.6.....7000-065  
0.7 ....7000-080