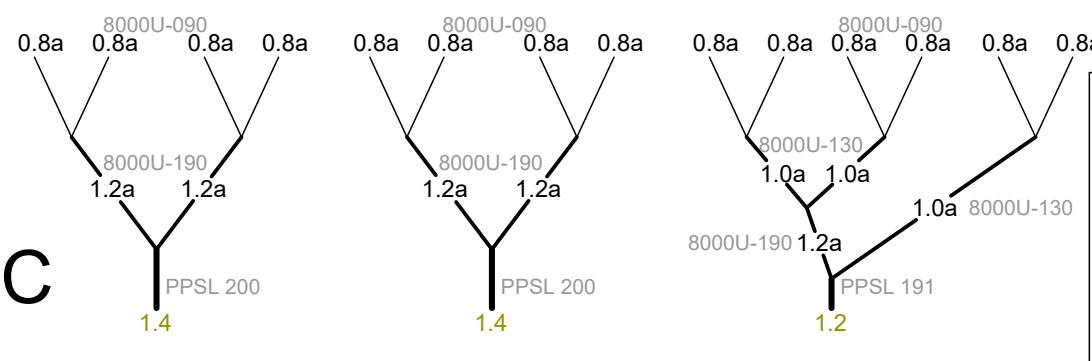
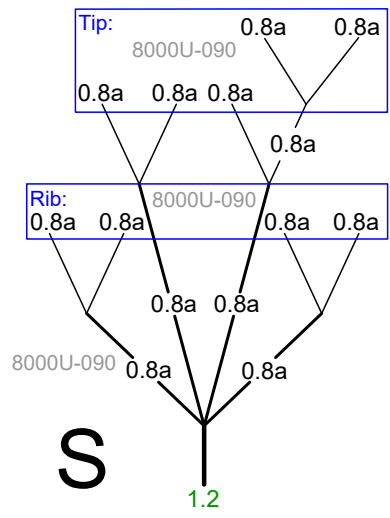
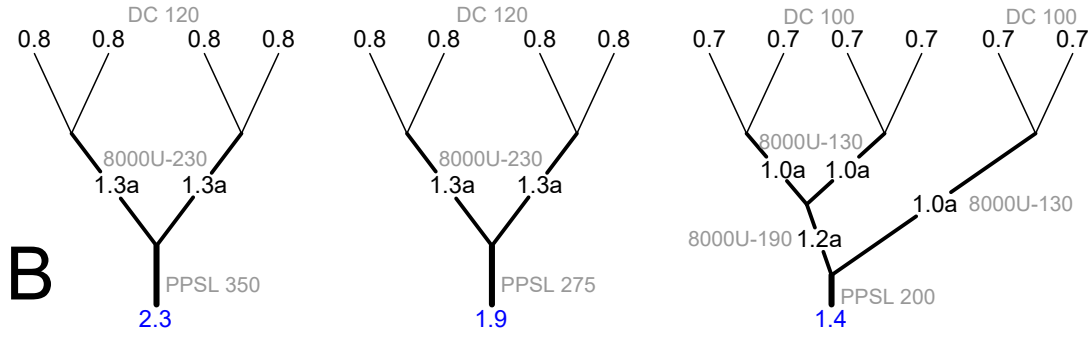
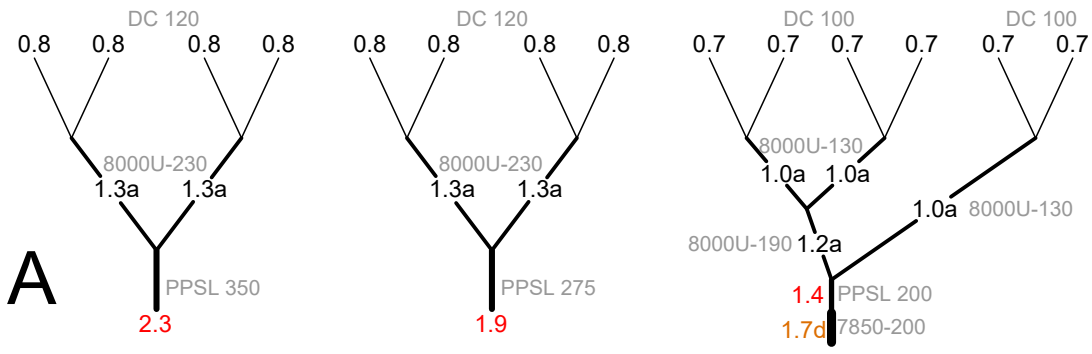
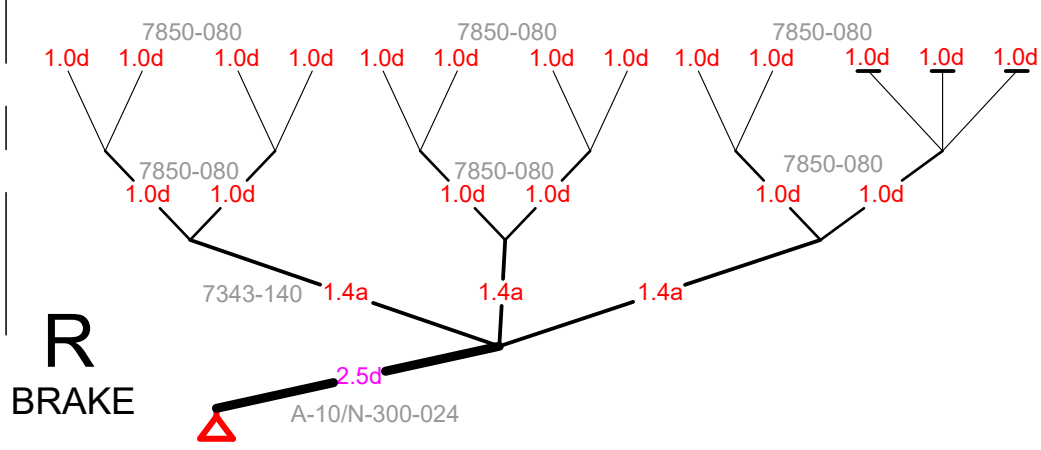
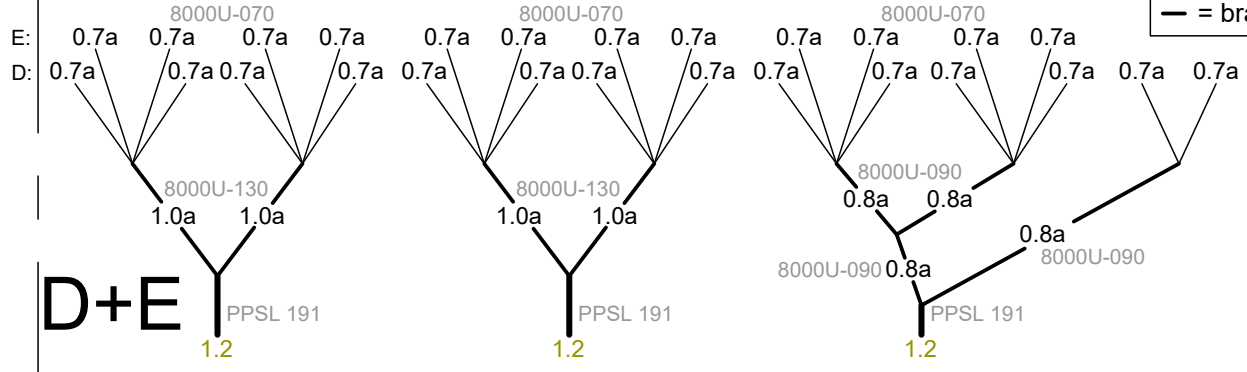


MIDDLE OF CANOPY



**LIROS Dyneema**  
 0.8 = DC 120  
 0.7 = DC 100  
 2.3 = PPSL 350  
 1.9 = PPSL 275  
 1.4 = PPSL 200  
 1.2 = PPSL 191  
 — = brake strap DC 160



**Edelrid Aramid**  
 1.4a = 7343 - 140  
 1.3a = 8000/U - 230  
 1.2a = 8000/U - 190  
 1.0a = 8000/U - 130  
 0.8a = 8000/U - 090  
 0.7a = 8000/U - 070

**Edelrid Dyneema**  
 2.5d = A-10/N-300-024  
 1.7d = 7850 - 200  
 1.0d = 7850 - 080