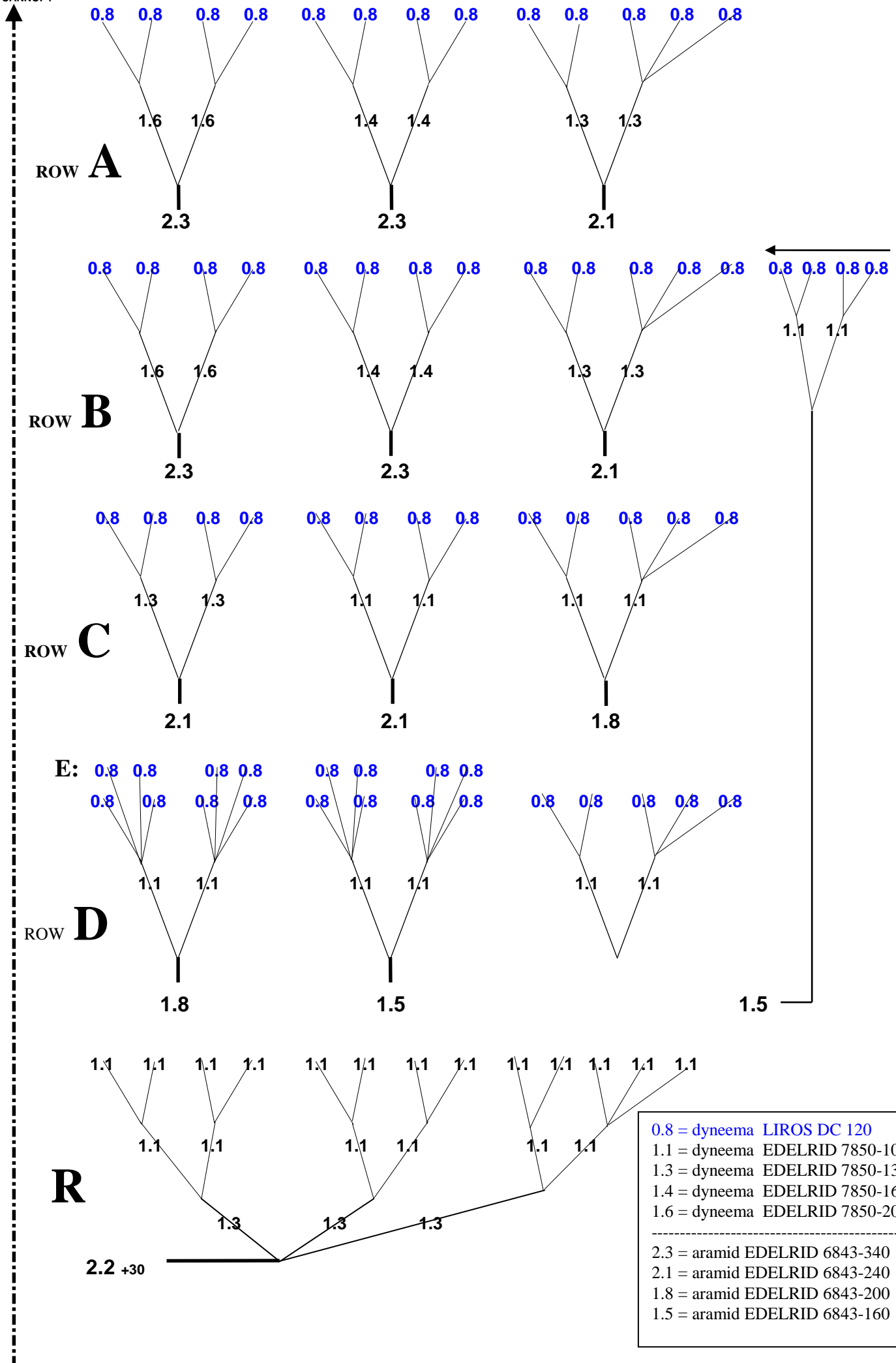


# Bi GOLDEN 2 38 - diameters (III)

MIDDLE OF

THE CANNOPY



ROW **A**

ROW **B**

ROW **C**

ROW **D**

ROW **E**

**R**

- 0.8 = dyneema LIROS DC 120
- 1.1 = dyneema EDELRID 7850-100
- 1.3 = dyneema EDELRID 7850-130
- 1.4 = dyneema EDELRID 7850-160
- 1.6 = dyneema EDELRID 7850-200
- 
- 2.3 = aramid EDELRID 6843-340
- 2.1 = aramid EDELRID 6843-240
- 1.8 = aramid EDELRID 6843-200
- 1.5 = aramid EDELRID 6843-160

2.2 +30