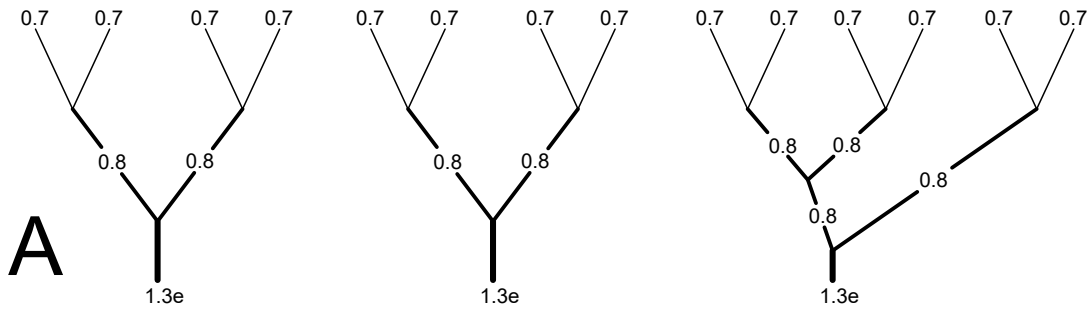
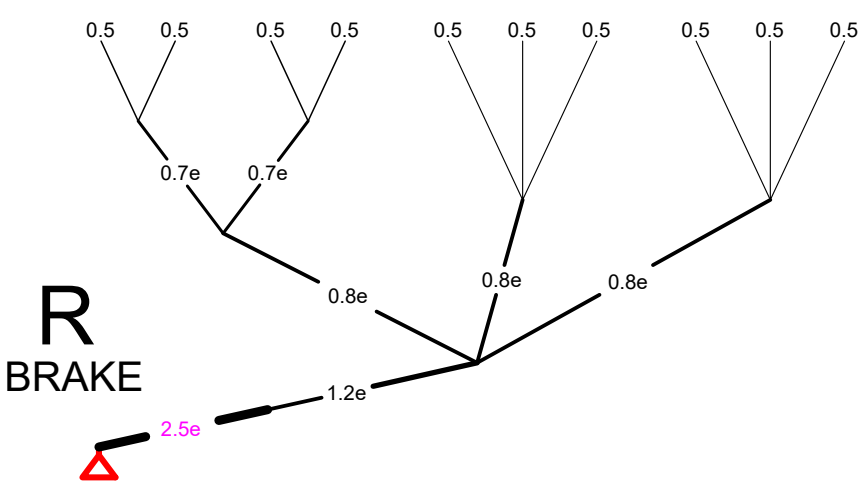
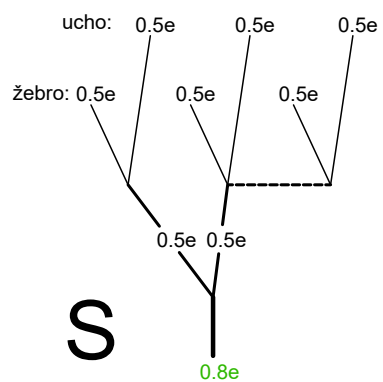
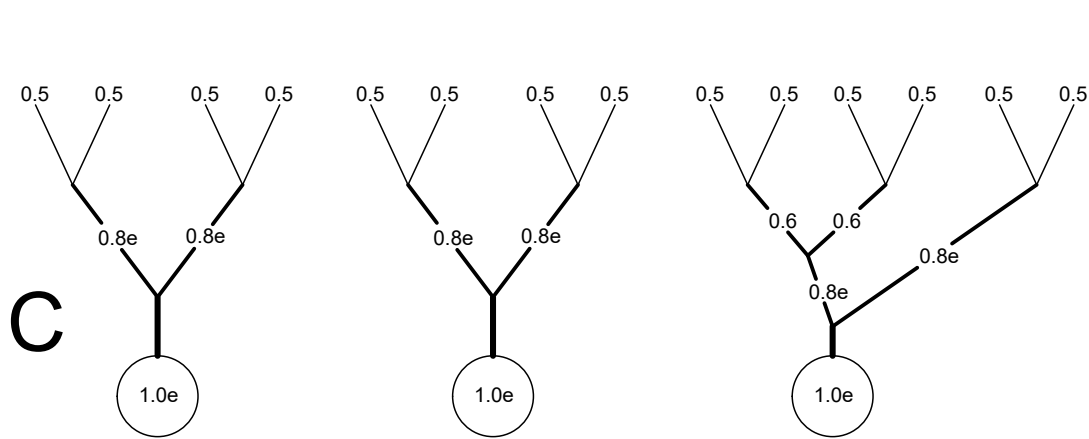
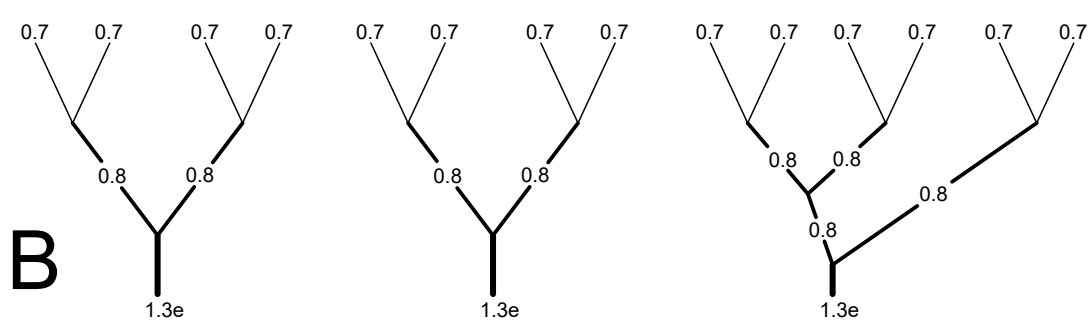


MIDDLE OF CANOPY



**LIROS Dyneema**  
 0.8 = DC 120 (white)  
 0.7 = DC 100 (white)  
 0.5 = DC 40 (white)



**Edelrid Aramid**  
 1.3e = 8000/U - 230  
 1.0e = 8000/U - 130  
 0.8e = 8000/U - 090  
 0.7e = 8000/U - 070  
 0.5e = 8000/U - 050

**Edelrid Dyneema**  
 2.5e = A-10/N-300-024