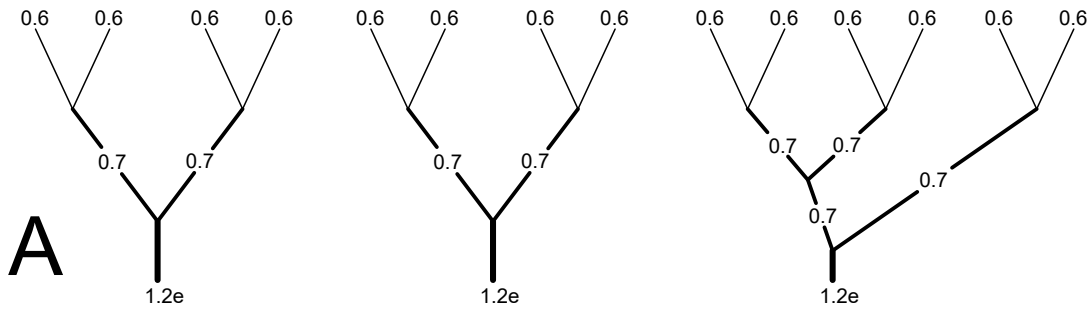


ASPEN6 - 22, 24, 26, 28 - Line diameters

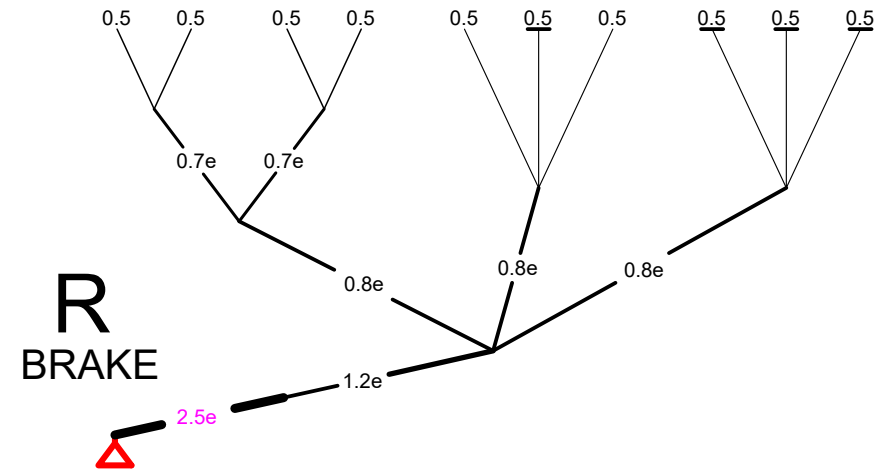
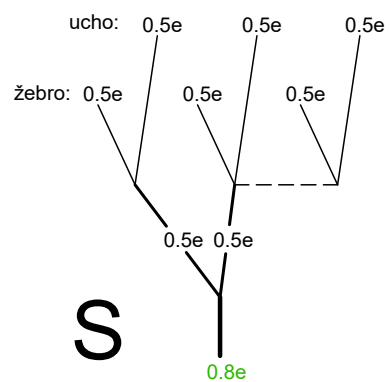
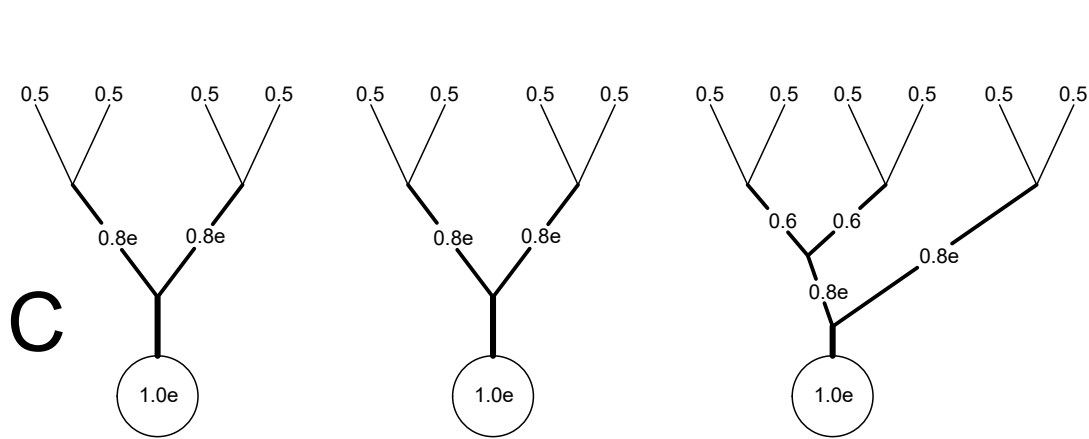
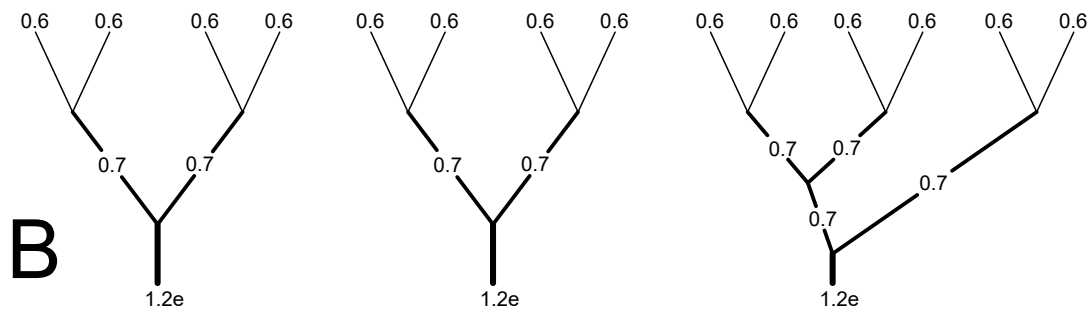
16.3.2017

MIDDLE OF CANOPY



LIROS Dyneema

0.7 = DC 100 (white)
 0.6 = DC 60 (white)
 0.5 = DC 40 (white)



Edelrid Aramid

1.2e = 8000/U - 190
 1.0e = 8000/U - 130
 0.8e = 8000/U - 090
 0.7e = 8000/U - 070
 0.5e = 8000/U - 050

Edelrid Dyneema

2.5e = A-10/N-300-024