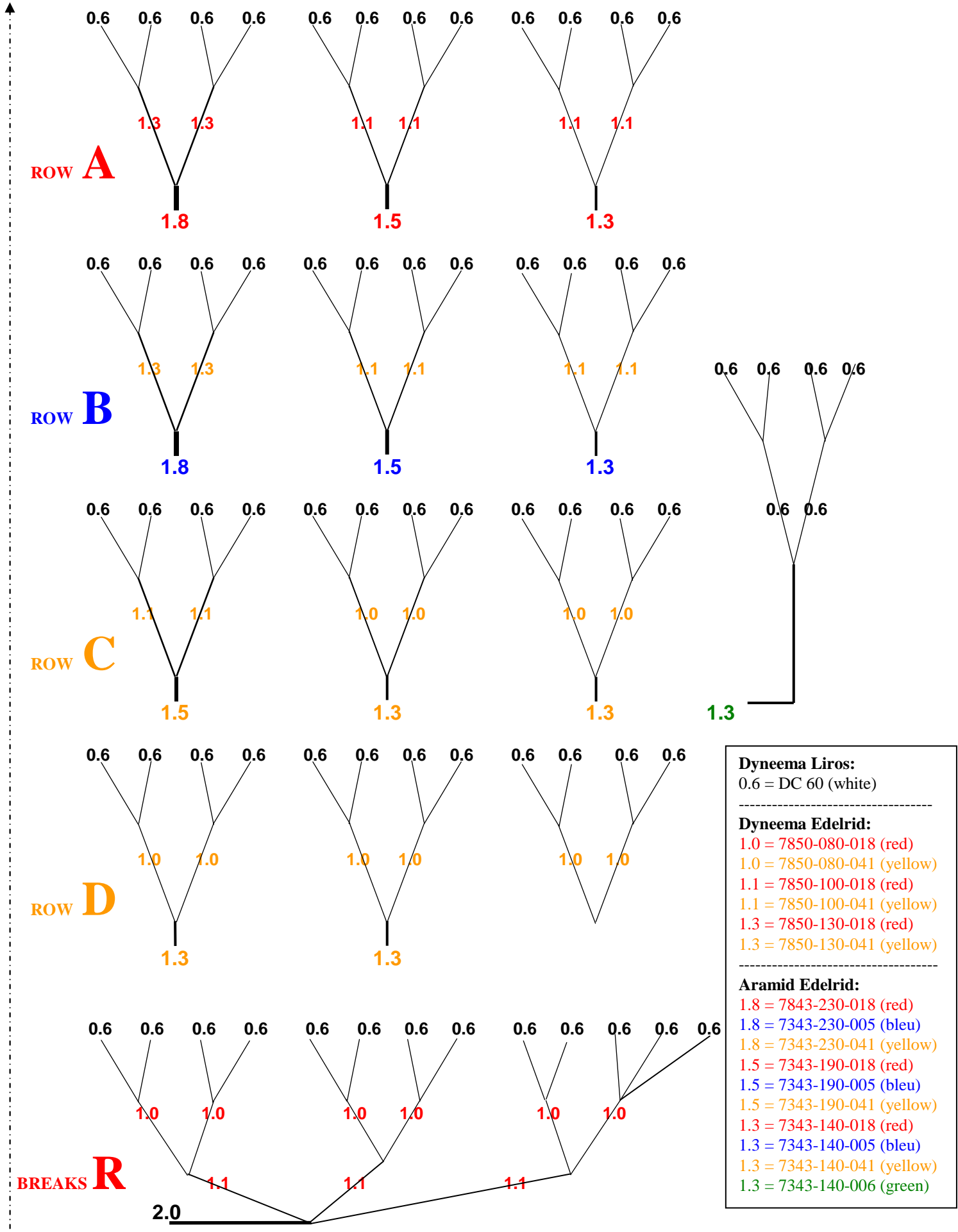


MIDDLE OF  
THE CANOPY

# ASPEN II - diameters and colours of lines



<b>Dyneema Liros:</b>
0.6 = DC 60 (white)
<hr/>
<b>Dyneema Edelrid:</b>
1.0 = 7850-080-018 (red)
1.0 = 7850-080-041 (yellow)
1.1 = 7850-100-018 (red)
1.1 = 7850-100-041 (yellow)
1.3 = 7850-130-018 (red)
1.3 = 7850-130-041 (yellow)
<hr/>
<b>Aramid Edelrid:</b>
1.8 = 7843-230-018 (red)
1.8 = 7343-230-005 (bleu)
1.8 = 7343-230-041 (yellow)
1.5 = 7343-190-018 (red)
1.5 = 7343-190-005 (bleu)
1.5 = 7343-190-041 (yellow)
1.3 = 7343-140-018 (red)
1.3 = 7343-140-005 (bleu)
1.3 = 7343-140-041 (yellow)
1.3 = 7343-140-006 (green)